

Stratman Designer from Change CSM



Mapping out business processes is accepted as being an important task organisations need to undertake to both meet compliance requirements and improve efficiencies. Stratman Designer facilitates the mapping out of these processes, incorporates relevant information and using it to create full documentation. This has been proven to save up to 60% of work time, compared with other methods.

BENEFITS

- **Analysis and Design**
- **Model & Document business procedures in Process Format**
- **Validation of design**
- **Business-driven change management / quick implementation**
- **Project Approach**
- **Single Data Entry**

KEY FEATURES

- **Business Modelling**
- **Validation**
- **Reporting**
- **Publishing**
- **Data Modelling**
- **Design Linking**
- **Supporting Documentation**
- **Supporting values**
- **Import/Export**
- **Images**

What is Stratman Designer?

Stratman Designer is a powerful business process analysis tool that helps you to understand your organisation and increase its productivity and efficiency.

Designer provides management with the ability to visualise and implement business change with easy to understand models of their business operations. It is also possible to define KPI's and graphs of performance data to indicate how the business is running against these objectives (See Stratman Informer).

Analysis and Design

Stratman Designer helps organisations to document current business processes, assign resources, costs and time against steps in the process. Outputs from Stratman can be used to define, agree and communicate a strategy to manage work throughout the organisation.

By capturing information in diagram format organisations can begin to illustrate that the processes are more similar than dissimilar and gain support to create 'Core' or consistent approaches across departments performing similar functions.

Model & Document business procedures in Process Format

Stratman Designer is an easy to use tool to create business processes. Designer ensures that all processes are complete and logical (via its validation checking) and by restricting the choice of design options, models are produced such that each symbol has the same meaning, easing the learning of how to read process models. Stratman Designer provides the ability to produce graphical representations of both business processes and workflow processes,

supported by associated documentation and objects with all relevant information in one place.

Validation of design

In Stratman Designer a palette is defined to hold the set of symbols and rules that are used to model a business process. This allows the process to be checked against the symbol rules to confirm that the design is logical and consistent. Different palettes can be defined according to need.

Business-driven change management / quick implementation

Stratman Designer allows the user to see all of the underlying automated processing within the workflow environment and be able to amend this, generating the revised workflow code without needing to program any changes.

This forward and reverse engineer capability exists for several workflow systems and could be extended to others. The workflow palette provides the user with the ability to link to a data model (also developed in Designer) to create a full systems design.

Project Approach

Stratman Designer helps review and rationalise business processes to ensure that processes reflect business needs and that systems actively support the business.

Single Data Entry

The data for the documentation is entered only once at the design phase in Stratman Designer.

This information is then used throughout, reducing costs by up to 60% (according to some customers).

Stratman Designer from Change CSM



Key Features

Business Modelling - Via palettes that can be configured to suit.

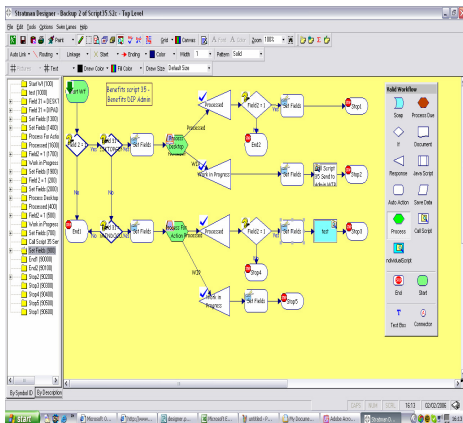
Validation - Ensuring that a model is complete, logical and contains all the information that the organisation requires.

Reporting - Contents within a model are stored on-line to assist in navigation within the design.

Publishing - Comprehensive, quick publishing to Word and HTML with any level of content of the model and then the template is retained for future reporting.

Data Modelling - A specific data entity modelling palette can be associated with multiple systems designs to support full system definition.

Design Linking - Sub layers and linked models to re-use processes and to 'join' processes into end-to-end processing models.



Designer Screen

Supporting Documentation – Detailed information about individual steps in the process can be captured at the step level and can be included in the published process.

Supporting Values - Configurable options to record what system is used, who performs this step, how long the action takes, data that is used, costs involved etc. These are then used for analysis across all processes.

Import/Export - Import of existing data models, export of all contents of the model in CSV/XML and into Specific Microsoft applications (e.g. Excel & Project).

Images - Inserting images behind appropriate steps in the workflow.

Who is Change CSM?

Change CSM provides products and services to enable organisations to optimise and manage their business processes and systems. Founded in 1995, our Business Operations solutions are based on its unique flagship product, **Stratman**, providing a combined Business Process Management (BPM), Business Process Analysis (BPA), Process Modelling and Continuous Improvement package with a focus on practical design, modelling, simulation, delivery and measurement of benefits.

With an established user base and an excellent partnership program, Change CSM is ideally placed to provide solutions for all organisations through adaptation of the Stratman product set.

Other Solutions from Change CSM

- **Workflow Agility** - Design & Test your workflow models, then create the workflow code & generate full documentation from the model directly.
- **Continuous Improvement** - Design & Test BPM models, include full metrics at each stage of the process and measure performance improvements at both the design stage and review.
- **Business Continuity** - Map out business continuity processes and access securely from alternative locations to ensure full recovery in the event of total loss of site.
- **Compliance** - Provide fully detailed process maps to meet government or market regulations. Have the ability to demonstrate that individuals have undertaken required tasks to ensure full compliance.
- **Operational Management BPM** - Review performance, evaluate, build, test in order to improve business processes.
- **Contract Certainty** - Insurance industry focussed solution aimed at helping companies achieve compliance to FSA regulations.
- **Task Management** - Allocate, Monitor and Measure tasks across the organisation based on team and resources.