

Stratman Evaluator from Change CSM



BENEFITS

- **Decision-making guidance**
- **Comparing old process and new processes**
- **Safe Testing Environment**
- **Advanced Impact Analysis**
- **Analysis of Current and Future Processes**
- **“What-if” Scenarios**

KEY FEATURES

- **Statistical Analysis**
- **Process Simulation**
- **Scenario Analysis**
- **Populations**
- **Reporting**

Having the ability to map out business processes becomes more beneficial if you have the ability to improve them. Being able to model the process and improve on these processes BEFORE you make changes will ensure an impact analysis can occur and the effects of change can be managed effectively.

What is Stratman Evaluator?

Stratman Evaluator enables business users to analyse their processes modelled in Stratman Designer. It produces statistical information about a process, including Straight Through Process timings, resource levels, cost benefit analysis & wait times.

This information may assist the identification of improvement opportunities.

It enables ‘Champion / Challenger’ type of comparisons to be conducted on the desktop, in an iterative manner where the inputs can be amended to view the impact on the process.

By providing answers to “what-if” scenarios, Stratman Evaluator allows an organisation to analyse any potential impact that a change will have on an organisation and consider the business risks on making these changes.

By evaluating the metrics involved in mapping out a business process, as opposed to just seeing a two dimensional view of the process will allow organisations to get a real picture of the changes required, whether that be reducing or adding steps in the process.

Evaluator significantly reduces the time and business risk in implementing business process change / organisational operation or supporting systems changes.

Decision-making guidance / model-driven - Stratman Evaluator provides an organisation with tools to review both manual and automated processes and determine the complexity of the different routes through these. It allows usage of data for “what-if” analysis on process re-design.

All of the information is visible against the initial process graphical designs.

These facilities provide the business with metric based measurement for current operations and for proposed business change.

Analysis of Current and Future Processes - Evaluated processes help ensure that the KPI's set for the process are realistic and achievable. Stratman Evaluator can assist in this process by providing measurement of the current activities and using this information to design a new process that removes current issues and problem areas from the existing processing, with expected gains to be received from moving to this.

Safe Environment Testing - The model environment provides a safe area to perform “what-if” analysis using previous live data ensuring change delivers the benefits expected.

Advanced Impact Analysis - Understand what would happen across the organisation as a whole if you were to change the process in one area.

“What-if” Scenarios - In order to make the correct change to a process, various scenarios can be analysed to allow an understanding of the impact on the group.

Stratman Evaluator from Change CSM



Product Features

Simulation - based upon statistical values set for the model. Stratman Evaluator can simulate actual operations whilst in the modelling world.

Statistical Analysis - For each decision within a process there will be a “yes” route and a “no” route. This results in the need for 2 scenarios, what happens if the decision is “yes” and what occurs if the decision is “no”. Evaluator generates all possible scenarios for a process.

Scenario analysis - For each of the scenarios Evaluator uses the values entered within Designer (or as altered in Evaluator) and calculates multiple alternatives on how an item can be analysed – i.e. end to end time, wait time, actual work time per resource.

Populations - Multiple alternatives of the volumes that are to go through the model and timings for the various actions can be analysed. These allow the user to perform “what-if” analysis to assist in resource modelling and profitability studies.

Reporting - Provides a strenuous list of reports according to area of interest i.e. Capacity Modelling, Diagram Details and Static Analysis. Added to these are tabs for Errors and also the generated Scenarios.

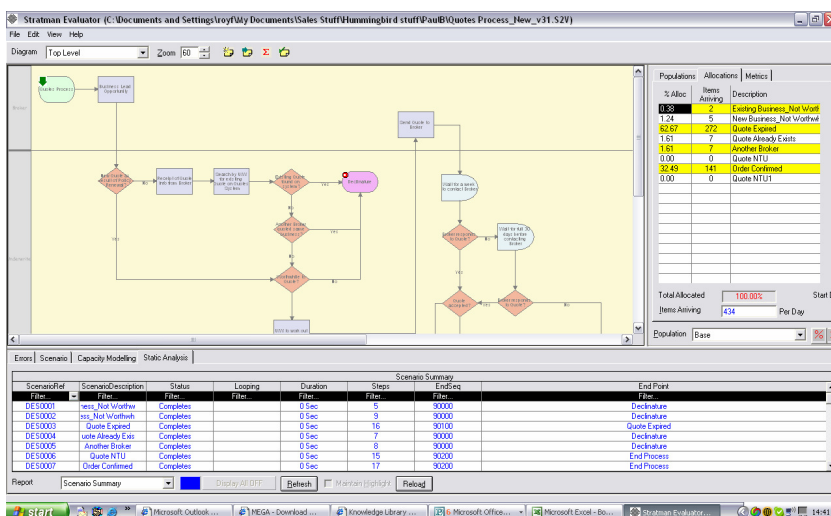
Who is Change CSM?

Change CSM provides products and services to enable organisations to optimise and manage their business processes and systems. Founded in 1995, our Business Operations solutions are based on its unique flagship product, **Stratman**, providing a combined Business Process Management (BPM), Business Process Analysis (BPA), process modelling and Continuous Improvement package with a focus on practical design, model, simulation, delivery and measurement of benefits.

With over an established user base together with an excellent partnership program, Change CSM is ideally placed to provide solutions for all organisations through adaptation of the Stratman product set.

Other Solutions from Change CSM

- **Workflow Agility** - Design & Test your workflow models, then create the workflow code & generate full documentation from the model directly.
- **Continuous Improvement** - Design & Test BPM models, include full metrics at each stage of the process and measure performance improvements at both the design stage and review.
- **Business Continuity** - Map out business continuity processes and access securely from alternative locations to ensure full recovery in the event of total loss of site.
- **Compliance** - Provide fully detailed process maps to meet government or market regulations. Have the ability to demonstrate that individuals have undertaken required tasks to ensure full compliance.
- **Operational Management BPM** - Review performance, evaluate, build, test in order to improve business processes.
- **Contract Certainty** - Insurance industry focussed solution aimed at helping companies achieve compliance to FSA regulations.
- **Task Management** - Allocate, Monitor and Measure tasks across the organisation based on team and resources.



Stratman Evaluator Screen